



Parts overview of the JOKON LED lighting set



4 hexagon screws M6



Insert the screws through the hole of the lamp (2 per lamp)



4 spacer bolts



Tighten the spacer bolts onto these attached screws (2 per lamp)



Make a cross with a knife in the 2 passages of the lower horizontal tube.





Remove these tulles from the tube

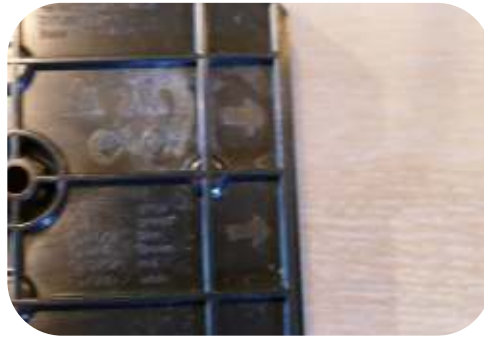


Insert the plug of the lamps through the largest hole (Dia. 30 mm) of the lower socket.



Insert both lamps, fitted with the spacer bolts, through the holes provided in the lower tube.





Please note that the arrows, indicated on the back of the lamp, point outwards.



4 black plastic washers



Place the black plastic washers (2 per lamp) over the threads of the spacer bolts.



4 serrated washers M6



Then place the knurled washers M6 (2 per lamp) over the threads of the spacer bolts.



nuts M6



Screw the whole with the nuts M6 (4 pieces) max. 1 Newton.



4 cover caps M6



Place the M6 caps on the nuts.

TIP : you can also glue these on so they stay in place better.



Plug the plug of bulbs through the grommet and replace the grommet.





only for All-in One: at the left rear light, the plug of the license plate light must also be inserted through the grommet.



The remaining wire of the license plate lighting can be stored in the lower tube.



Replace the lighting



Secure all wiring with the supplied cable clamps to the rear of the lower horizontal tube.



Attach the 13-pin plug to the plugs of the lamps. Red is right, blue is left.



Push the cover caps into the unused holes.



Place the black caps on the lamps.

